



Shaping A Home We Love

Neighbourhood Renewal Programme (NRP) Public Consultation

Blocks 296, 296A to 296E, 297, 297A to 297D
Choa Chu Kang Ave 2

For Residents of

Blocks 296, 296A to 296E, 297, 297A to 297D Choa Chu Kang Ave 2

Your estate has been selected for the Neighbourhood Renewal Programme (NRP), a fully government-funded initiative aimed at revitalising your neighbourhood with new facilities and enhancing the living environment for you and your loved ones.

Upcoming improvements include practical facilities and inclusive activity spaces designed to benefit residents of all ages.

Together, let's build a Keat Hong we love!



You're Invited!



Dear Residents,

Come, share your ideas on how we can make the home we love better.

Public Consultation

Date: Saturday, 28 March 2026

Time: 5.30pm to 7.30pm

Location: Multi-Purpose Hall between Blocks 296B and 296C Choa Chu Kang Ave 2

No registration required.

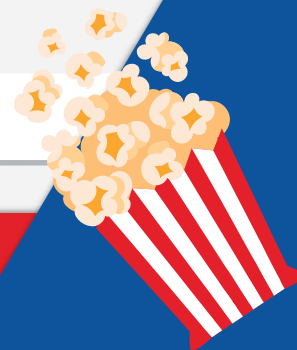
Dialogue with

Mr Zhulkarnain Abdul Rahim

Minister of State for Foreign Affairs and
Social and Family Development

MP for Chua Chu Kang GRC (Keat Hong)

Vice-Chairman of Chua Chu Kang Town Council



Fun Fair

LIVE FOOD STATIONS

DOOR GIFTS

PERFORMANCES

NRP EXHIBITION

MESSAGE FROM

Mr Zhulkarnain Abdul Rahim

Let's Shape the Home We Love in Keat Hong



Dear Residents,

I have good news to share! The upcoming Neighbourhood Renewal Programme (NRP) will bring new amenities and enhancements for Blocks 296, 296A to 296E, 297, 297A to 297D Choa Chu Kang Ave 2.

This fully government-funded initiative aims to enhance everyday living and create more welcoming spaces for residents of all ages. Some of the proposed improvements include:

- Themed playgrounds that add colour and character to the estate, giving our children more engaging spaces to explore and play
- Fitness corners with modern equipment to support active and healthy lifestyles
- Covered linkways and drop-off porches to improve connectivity and make daily journeys more convenient

Join us on **Saturday, 28 March 2026** from **5.30pm to 7.30pm** at the **Multi-Purpose Hall between Blocks 296B and 296C Choa Chu Kang Ave 2** for our NRP Public Consultation & Fun Fair to find out more about the proposed improvements!

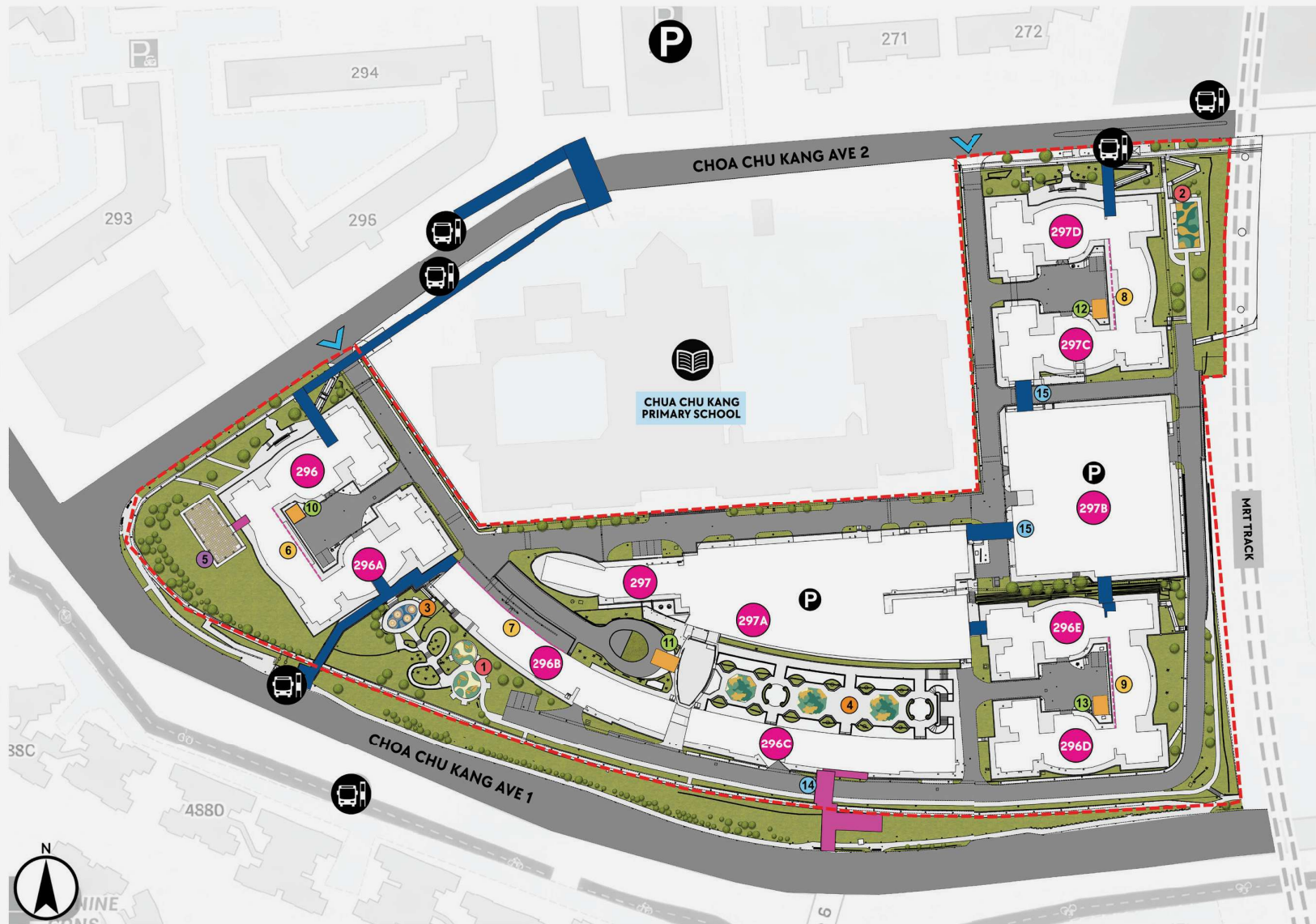
We want to hear from you. Share with us your views and suggestions. Together we can shape Keat Hong into a home where we love to live, stay, play, bond and get healthier together.

I look forward to seeing you and your family at the event. Together, let's build a Keat Hong we love!

Overview of the Proposed Improvement Works

The map highlights the various proposed facilities within the estate, designed to promote active living and convenience for our residents. These amenities include playgrounds, fitness corners, linkways, drop-off porches, pavilion, and many other useful features.

- 1 THEMED CHILDREN PLAYGROUND AT BLK 296B
- 2 THEMED CHILDREN PLAYGROUND AT BLK 297D
- 3 ADULT FITNESS STATION AT BLK 296A
- 4 ELDERLY FITNESS STATION AT BLK 297A
- 5 NEW PRECINCT PAVILION AT BLK 296
- 6 PROPOSED AWNING STRUCTURE AT BLK 296
- 7 PROPOSED AWNING STRUCTURE AT BLK 296B
- 8 PROPOSED AWNING STRUCTURE AT BLK 297C
- 9 PROPOSED AWNING STRUCTURE AT BLK 296D
- 10 PROPOSED DROP OFF PORCH AT BLK 296
- 11 PROPOSED DROP OFF PORCH AT BLK 297
- 12 PROPOSED DROP OFF PORCH AT BLK 297C
- 13 PROPOSED DROP OFF PORCH AT BLK 296D
- 14 PROPOSED HIGH AND LOW LINKWAY FROM BLK 296C
- 15 MODIFICATION TO EXISTING HIGH LINKWAY
- PROPOSED AWNING STRUCTURE
- NRP SITE BOUNDARY
- ∨ VEHICULAR ACCESS POINT
- 296 BLOCK NUMBER
- 🚌 BUS STOP
- EXISTING HIGH AND LOW LINKWAY
- PROPOSED HIGH AND LOW LINKWAY



A More Comfortable Walk

Enhanced Linkway

Two upgraded linkway roofs from Block 297A to 297B and Block 297B to 297C will offer better protection from sun and rain, making daily walks a pleasant one.



Sheltered Walks Rain or Shine

Sheltered Linkway

The linkway from Block 296C will improve connectivity within the estate, making it easier for residents to move around.



Comfortable Drop-off Rain or Shine

Drop-off Porch



A new drop-off porch at Block 297 will provide safer and more convenient pick-ups and drop-offs for residents.

Drop-off Porch

Three new drop-off porches at Blocks 296, 296D and 297C will make it easier for residents to board or alight from vehicles, rain or shine.



Comfortable Walkways

Extended Sheltered Corridor

The extended sheltered corridors at Blocks 296 to 296A, 296B, 296D to 296E and 297C to 297D will provide additional shade and rain protection, offering residents a more comfortable commute daily.



Space to Gather & Connect

Precinct Pavilion



The new sheltered pavilion at Block 296 will offer a welcoming space for residents to gather, exercise and connect.

Double the Playtime Fun

Themed Playground



A new themed playground at Block 296B will give children a fun place to play and explore.

Themed Playground

Children can enjoy active and imaginative play at the new themed playground at Block 297D.



More Ways to Keep Fit

Adult Fitness Corner



The space at Block 296A will be upgraded into an adult fitness corner with new equipment to support a wider range of workouts

Senior Fitness Corner

The senior fitness corner at Block 297A will be upgraded with new equipment to support active and healthy ageing.



Easier Block Recognition

Distinctive Motifs & Colours

The blocks will be painted with distinctive colours and motifs to help residents, especially seniors, identify them more easily. The designs are inspired by the adventure-living theme for Choa Chu Kang.

296



296A



296B



297



297A



297B



Brighter Block Signages

Enhanced LED Block Signages

New LED block signages will improve visibility, making it easier to identify each block, day or night.



Easier Navigation

Additional Directional Signs

More directional signs will be added around the precinct to help residents find key amenities more easily.



LIFT LOBBY →



BLK 297 →





297D



← LIFT LOBBY

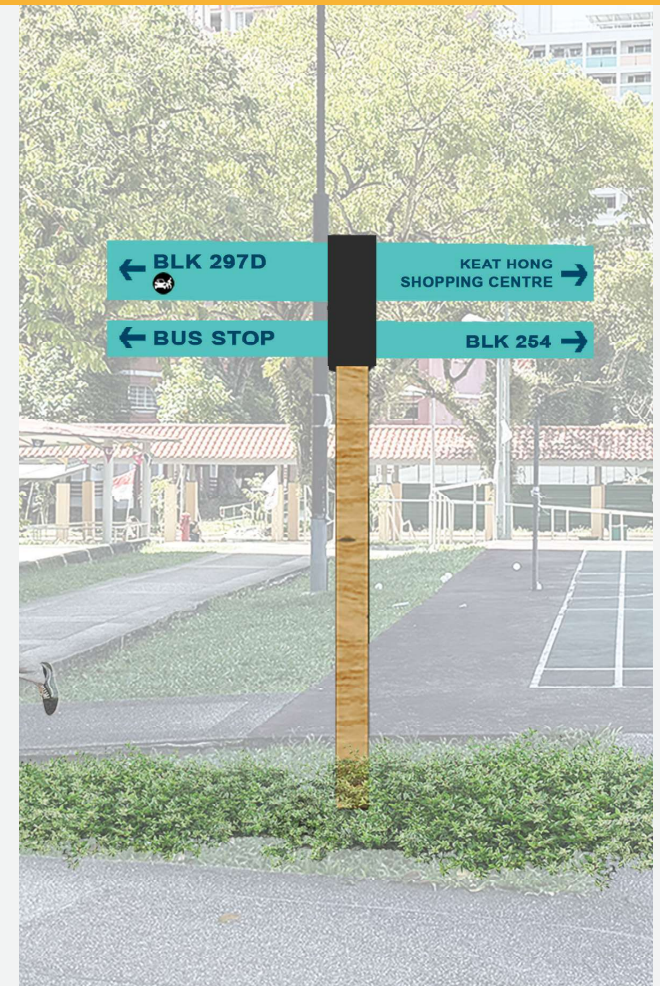
← CHILDREN PLAYGROUND



Consistent Wayfinding Design

Cohesive Signage Design

New directional signs with coordinated colours and motifs will make it easier for residents to find their way around the precinct.



Upgraded Letterboxes

New Letterboxes



New letterboxes are designed to be wheelchair-friendly, ensuring accessibility for all residents.



Voting Form



TO: Neighbourhood Renewal Programme Working Committee
Blocks 296, 296A to 296E, 297, 297A to 297D Choa Chu Kang Ave 2

I hereby indicate my decision on the proposed Neighbourhood Renewal Programme (NRP):

SUPPORT DO NOT SUPPORT

Name : _____ Contact No.: _____

Block No. : _____ Unit No. : _____

Signature : _____

Suggestion : _____

Please return the completed Voting Form by 30 April 2026 via one of the following modes:

(1) Mail or Submit to: Chua Chu Kang Town Council, 309 Choa Chu Kang Ave 4,

#02-02 Choa Chu Kang Centre, Singapore 680309

(2) Email to : info@ccktc.org.sg

(3) Submit at: Public Consultation on 28 March 2026, 5.30pm to 7.30pm at the

Multi-Purpose Hall between Blocks 296B and 296C Choa Chu Kang Ave 2

Working Committee

Advisor

Mr Zhulkarnain Abdul Rahim

Minister of State for Foreign Affairs and
Social and Family Development
MP for Chua Chu Kang GRC (Keat Hong)
Vice-Chairman of Chua Chu Kang Town Council

Secretary

Lai Chin Kwang

General Manager
Chua Chu Kang Town Council

Robin Ang

Property Manager
Chua Chu Kang Town Council

Members

Ms Nancy New Lay Tin

Mr Tan Wai Xiang

Mr Murari Uma Maheswara Rao

Mr Xiang Xiang Yu





The information contained in this brochure is current at the time of printing. It is subject to change as may be required by the relevant authorities and / or at the sole discretion of Chua Chu Kang Town Council. All rights reserved. Reproduction of this brochure in whole or in part without written permission from Chua Chu Kang Town Council is strictly prohibited.

*Disclaimer: Images used are for reference and not representative of final proposed designs. Personal information collected is used solely for this exercise and will not be released for other purposes unless specified under PDPA.



Hotline : 6569 0388

Email : info@ccktc.org.sg

Website : www.ccktc.org.sg